



9th World Trade Fair & Conference  
 09 - 11 October 2012  
 Messe Düsseldorf, Germany  
**ALUMINIUM 2012**



# Shell Scheme

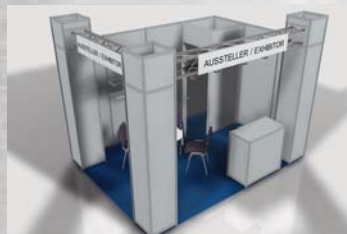
THREE TURNKEY BOOTH VERSIONS WITH FULL SERVICE PACKAGE:

- Convenient order service: We organise everything for you and are available on site
- Customisation service: Create your individual stand adding supplementary elements
- On site service: We attend to your problems at the "shell scheme" lounge

## AVANT Ultra modern stand design, modern truss design

<b>Carpet</b>	Carpet Rips, colour: anthracite or blue, incl. covering foil
<b>Construction</b>	System elements, consisting of upright-extrusion, floor and ceiling frame, lightgrey coated
<b>Walls</b>	HF-Platten, 3,2mm strong, colour lightgrey
<b>Built in elements</b>	Truss-elements around the open corridor sides
<b>Basic equipment</b>	1 Infodesk open

Equipment	< 16 sqm	17-34 sqm	> 34 sqm
- Infodesk open (1000x500x1020mm)	1	1	1
- Cabine (lockable door)	1x1m	1x2m	2x2m
- Shelves (1000x300mm)	2	4	6
- Table „Business“ round	1	1	2
- Chairs "Comodo"	4	4	8
- Waste paper basket	1	1	1
- Triple socket	1	1	2
- Lighting, flexible halogenspot	4	8	12
<b>Price* per sqm</b>	<b>130.00 €</b>	<b>120.00 €</b>	<b>110.00 €</b>



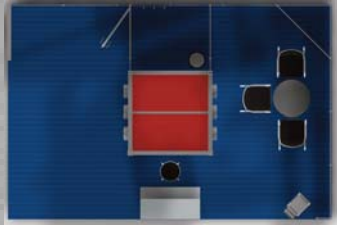
\*plus 160.00 € power connection (incl. consumption)

Fascia: 1 fascia element per side (lettering not included)

# ATLAS

Open and constructive stand design, stylistic panel with ceiling, easily adjustable spots create the right illumination for your products

- Carpet** Carpet Rips, clour: light grey, dark grey, anthracite, red, blue or beige, incl. covering foil
- Construction** Stand system Octanorm, supporting and beam profile matt finished
- Walls** white coated, stylistic-panel: dark grey, light grey, red or blue

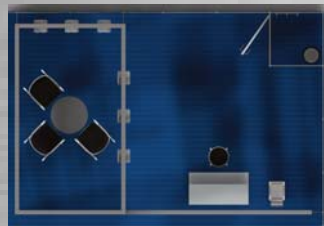


Equipment	per 12 sqm	per 4 sqm
- Bar desk, with shelves	- 1 bar chair "Florence"	- 1 flexible halogenspot
- Cabine with lockable door, 1x1m + stylistic element with space for your company logo (logo not included)	- 1 literature holder - 1 table "Florence" - 3 chairs "Disco" (chromium frame, seat/chair-back velours black)	
	- 1 waste paper basket - 1 coat rack - 1 triple socket	
<b>Price* per sqm</b>		
< 16 sqm	17-34 sqm	> 34 sqm
<b>180.00 €</b>	<b>170.00 €</b>	<b>160.00 €</b>
*plus 160.00 € power connection (incl. consumption)		
Fascia: 1 fascia element (lettering not included)		

# HELIOS

Ultra modern and distinctive stand design, precise ceiling truss, the perfect place for a company logo, easily adjustable spots create the right illumination for your products

- Carpet** Carpet Rips, clour: light grey, dark grey, anthracite, red, blue or beige, incl. covering foil
- Construction** Stand system Octanorm, supporting and beam profile matt finished
- Walls** white coated, stylistic-panel: dark grey, light grey, red or blue



Equipment	per 12 sqm	per 4 sqm
- Bar desk, with shelves	- 1 bar chair "Florence"	- 1 flexible halogenspot
- Cabine with lockable door, 1x1m	- 1 literature holder - 1 table "Florence" - 3 chairs "Disco" (chromium frame, seat/chair-back velours black)	
	- 1 waste paper basket - 1 coat rack - 1 triple socket	
<b>Price* per sqm</b>		
< 16 sqm	17-34 sqm	> 34 sqm
<b>195.00 €</b>	<b>185.00 €</b>	<b>175.00 €</b>
*plus 160.00 € power connection (incl. consumption)		
Fascia: 1 fascia element per side (lettering and logo not included)		

We hereby order the following services for hire in accordance with the Terms and Conditions of Reed Exhibitions Deutschland GmbH for stand construction.

Stand Design:  AVANT  ATLAS  HELIOS Booth No:

Stand surface: L  x B

Stand type:  row stand  corner stand  3 sides open  island site

Carpet:  anthracite  blue

Power: Power connection (incl. consumption)

Lettering: Helvetica semi-bold black, VH=150 mm / per letter 2,95 € (logo on request)

Text: 

--	--	--	--	--	--	--	--	--	--	--	--	--	--	--	--	--	--	--	--

Logos on request, will be charged separately! The walls are foil coated. Do not damage them with nails etc. Further modules on request, additional orders and graphic-orders will be charged by the subcontractor directly to the customer. A surcharge of 25% will be made in addition to the fees for orders received within two weeks prior to the construction period.

Place, date

stamp, signature

company, contact person